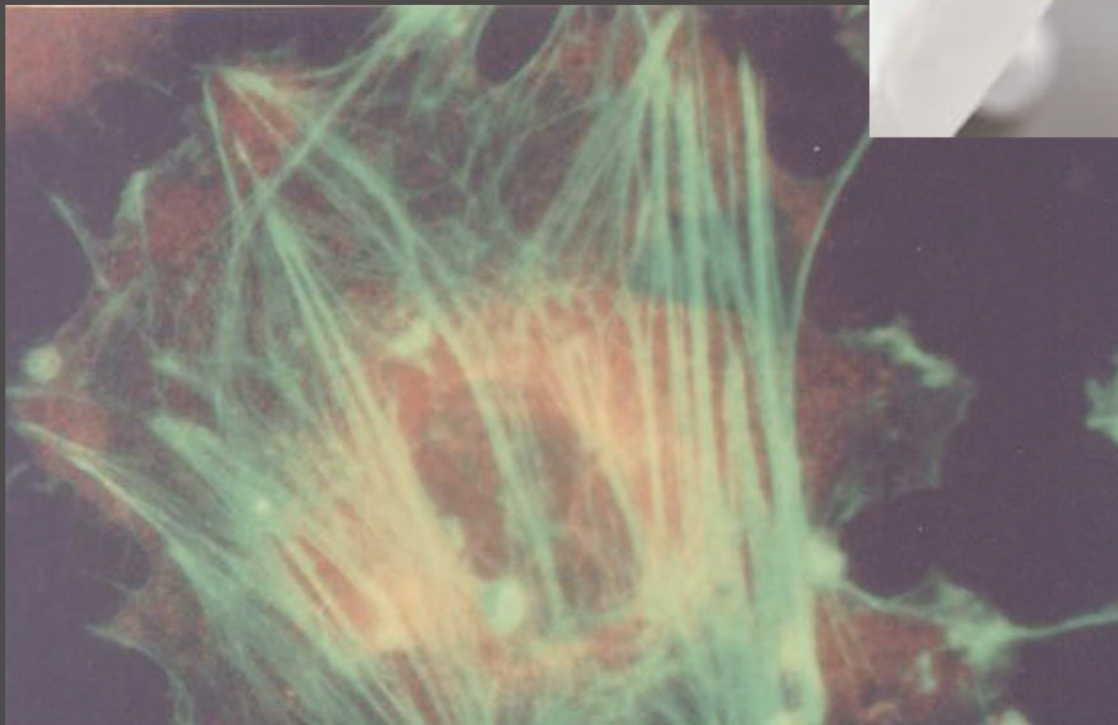


Thermo IEC MB Centrifuge



IEC Micro MB

The Micro MB for Microhematocrit meets or exceeds all the requirements set forth in the NCCLS "Standard Procedure for the Determination of Packed Cell Volume by the Microhematocrit Method" as well as other U.S. and international standards and protocols.

The Model MB centrifuge provides the medical profession with a means of providing a substantial saving in time and labor. The results are accurate, only a micro quality of blood is necessary and the inexpensive capillary tubes can be used once and discarded, eliminating the cleaning of expensive glassware. This machine is equipped for automatic operation. Turning the timer knob turns the machine on as it sets thru running time. The centrifuge shuts off automatically and rings a bell.

The IEC MB centrifuge is equipped with an universal motor for use on 115 volt 50/60 cycle or 230 volt 50/60 cycle AC as indicated on the data plate on the bottom of the base.

Intended Use of the IEC MB Centrifuge

The micro method for determination of hematocrit had been widely used in clinical laboratories for many years. The results of micro-hematocrit determinations are recognized as being fully equivalent to the results of macro determinations. The hematocrit is a quantitative test of the red cells and the plasma content of a micro-sample of human blood.

Specifications	
Rotational Speed	11,600 minimum rpm
	14,000 maximum rpm
Relative Centrifugal Force (RCF)	13,200 xg (275 rotor) minimum
	8,700 xg (837 rotor) minimum
	19,200 xg (275 rotor) maximum
	12,700 xg (837 rotor) maximum
Acceleration	Less than 10 seconds
Deceleration	Less than 5 seconds (brake)
	Approx. 45 seconds (coast)
Capacity	12 x 2.0 ml (837 rotor)
	24 x Hematocrit Tubes (275 rotor)
Timer	
Range	0 to 15 minutes
Incrementals	30 seconds
Accuracy	+/- 5% full scale
Power Requirement	120 VAC +/- 10%, 50/60 Hz
Power Consumption	140 Watts (operating)
Heat Output (typical)	480 Btu/hr
Height	
Cover Closed:	229 mm (9 in.)
Cover Opened:	457 mm (18 in.)
Width	254 mm (10 in.)
Depth	279 mm (11 in.)
Net Weight	9.1 kg (20 lbs.)